

Hawthorn Close, Aldershot

£340,000

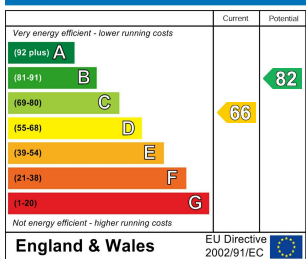

MARTIN & CO

Hawthorn Close, Aldershot

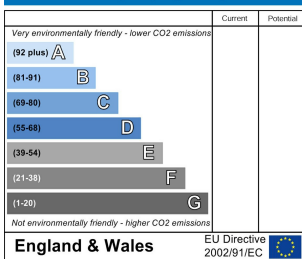
- Three Bedroom End of Terrace House
- Open Plan Living/Dining Area
- Conservatory
- Front & Rear garden
- On street parking
- Council Tax Band: C

Martin & Co is delighted to present a three-bedroom, end-terrace house situated on Hawthorn Road in Aldershot. This home features a spacious living/dining area, a sunlit conservatory, a fully equipped kitchen, and a generously proportioned bathroom. Additional advantages include street parking, gas central heating, double-glazed windows, and proximity to local conveniences and transportation networks.

Energy Efficiency Rating

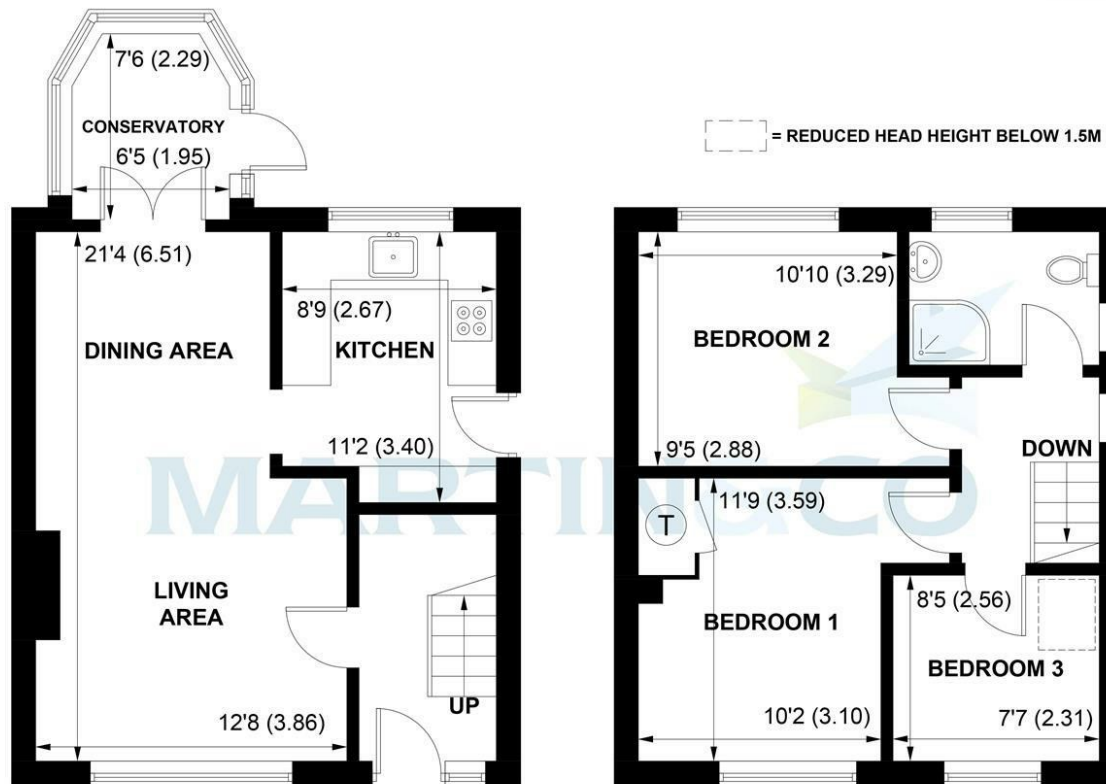


Environmental Impact (CO₂) Rating



Hawthorn Close, Aldershot

Approximate Gross Internal Area
79.6 sq m / 857 sq ft



GROUND FLOOR

FIRST FLOOR

This plan is for layout guidance only. Not drawn to scale unless stated. Windows and door openings are approximate. Whilst every care is taken in the preparation of this plan, please check all dimensions, shapes and compass bearings before making any decisions reliant upon them. (ID1080842)
Produced by BlueSky Estate Agency Services on behalf of Martin&Co

Martin & Co Aldershot Sales

173 Victoria Road, Aldershot, Hampshire, GU11 1JU
01252 311974 . aldershot@martinco.com

01252 311974

<http://www.martinco.com>



Accuracy: References to the Tenure of a Property are based on information supplied by the Seller. The Agent has not had sight of the title documents. A Buyer is advised to obtain verification from their Solicitor. Items shown in photographs including but not limited to carpets, fixtures and fittings are not included unless specifically mentioned within the sales particulars. They may however be available by separate negotiation. Buyers must check the availability of any property and make an appointment to view before embarking on any journey to see a property. No person in the employment of the agent has any authority to make any representation about the property, and accordingly any information given is entirely without responsibility on the part of the agents, sellers(s) or lessors(s). Any property particulars are not an offer or contract, nor form part of one. **Sonic / laser Tape:** Measurements taken using a sonic / laser tape measure may be subject to a small margin of error. **All**

Measurements: All Measurements are Approximate. **Services Not tested:** The Agent has not tested any apparatus, equipment, Fixtures and Fittings or services and so cannot verify that they are in working order or fit for the purpose. A Buyer is advised to obtain verification from their Solicitor or Surveyor.

